



Origin Notes

Washing Station: Ruli Mountain (privately owned)

Region: Northern province, Gakenke district, 45 minutes on dirt roads from the nearest paved road. This washing station provides valuable employment opportunities and coffee-processing capacity to the rural communities surrounding it.

Economic importance of coffee: Coffee is Rwanda's second largest foreign exchange earning sector, (first is tea), (Export.gov, 2017).

Historical Context:

•Coffee production has been at the core of farm family livelihoods in Rwanda for many generations and today it serves as source of cash income for over 355,000 households across the country. Since 2001, the coffee value chain has seen a transformation in quality (fully-washed coffee) and is now well-established in specialty coffee markets around the globe. With the construction of 245 washing stations, the processing segments of the sector have prospered. Dry mills and export companies, both domestic and international, have similarly emerged during this period. While the value-added from this transformation has benefited Rwanda, those at the base, the coffee producers, have shared the least in the new prosperity. (ALGC, 2017)

Predicament of the Smallholder:

Smallholder coffee producers typically have about 106 coffee trees, i.e. a tiny fraction of a hectare. But they are more productive (per tree) than largeholder farmers. They lack capacity but are highly motivated to extract as much value as they can from their small holdings simply out of necessity. Their main investment is their own household labor. Despite higher productivity, their high labor investment makes coffee unprofitable for most... but LTH and Artisan Coffee are two companies which endeavor to change that fate. Through higher payments, based on enforceable quality criteria, smallholders' labor is rewarded. (AGLC, 2017)

Contact: Artisan Coffee Imports
Ruth Ann Church, Tel: 734-717-6278
rachurch@artisancoffeeimports.com,
www.artisancoffeeimports.com



RWANDA COFFEE MAP 2011

DISTRIBUTION OF COFFEE WASHING STATION & COFFEE TREES BY SECTOR



UGANDA

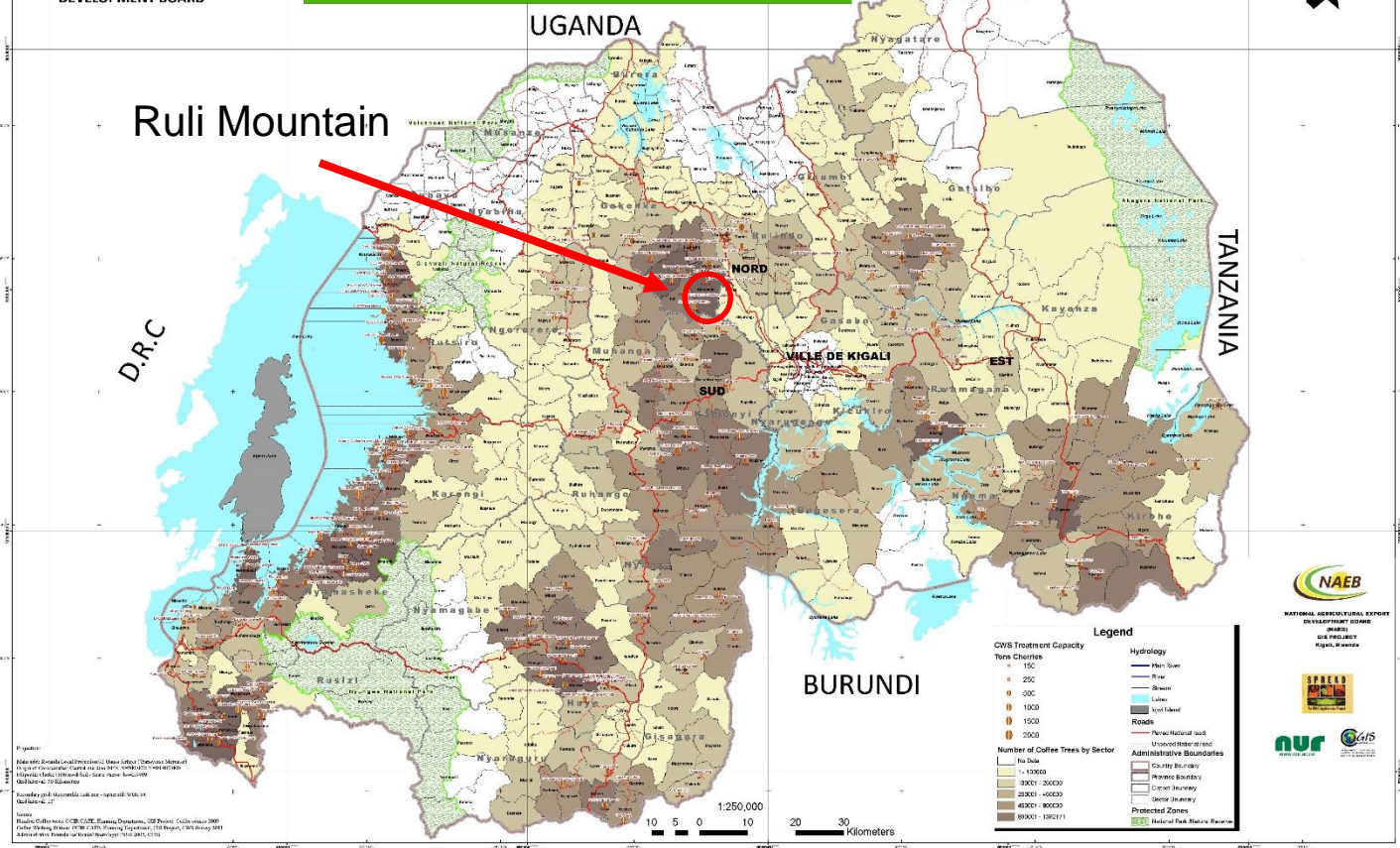
Ruli Mountain



TANZANIA

D.R.C

BURUNDI



Legend

CWS Treatment Capacity	Hydrology
Tons Cherries	Blue line: Main River
150	Blue line: River
200	Blue line: Stream
300	Blue line: Lake
1000	Blue line: Wetland
1500	Blue line: Road
2000	Blue line: National road
	Blue line: Unimproved road
Number of Coffee Trees by Sector	Administrative Boundaries
0-10000	Black line: County boundary
10001-20000	Black line: District boundary
20001-40000	Black line: Sector boundary
40001-80000	Black line: Sector boundary
80001-150000	Black line: Protected zones
	Green line: National Park, Nature Reserve



Map scale: 1:1,250,000
Map projection: UTM
Data source: NAEB, 2011
Map prepared by: NAEB, 2011

